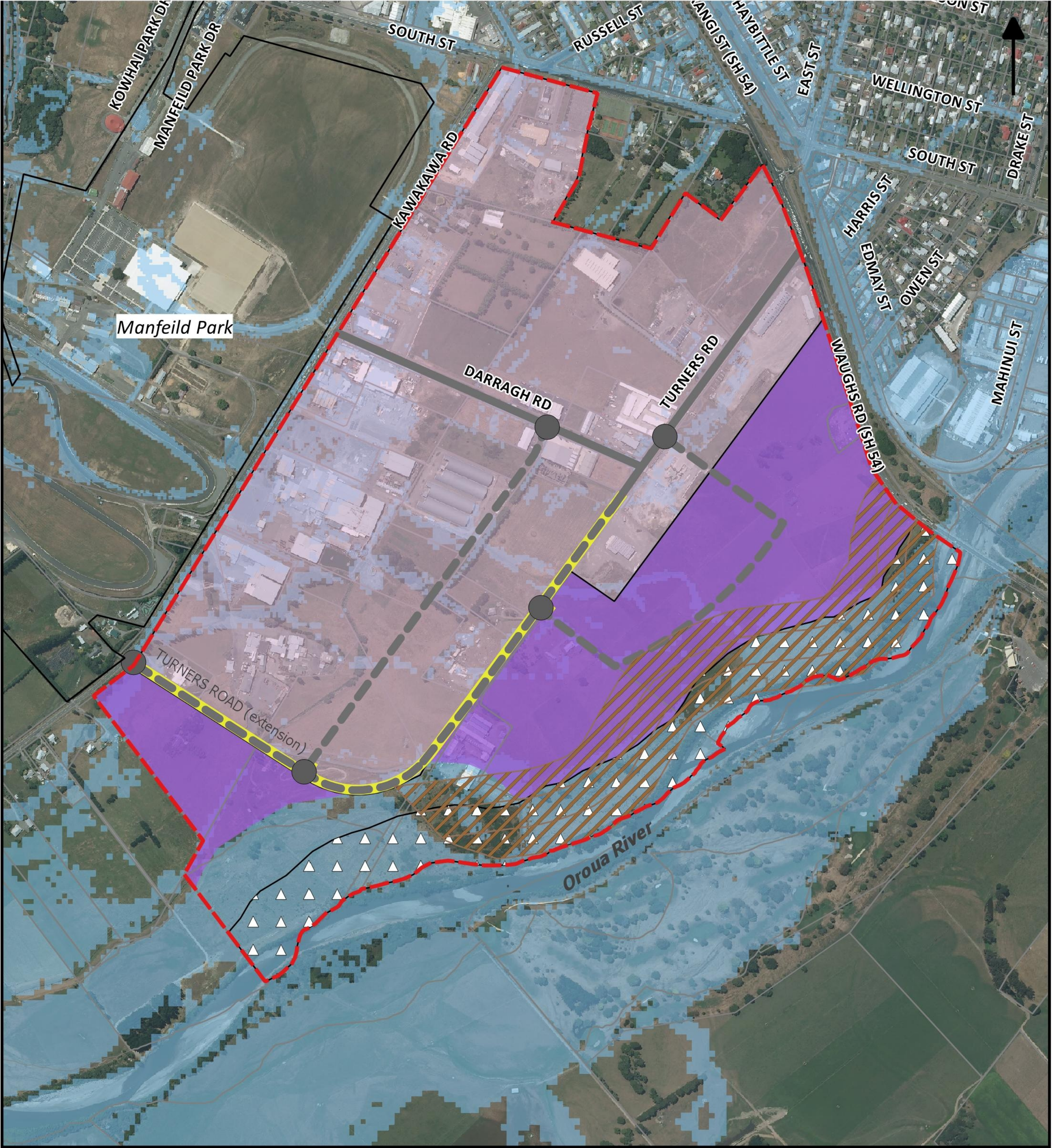


APPENDIX 16.2 - KAWAKAWA INDUSTRIAL PARK GROWTH AREA



Reference

- Existing Industrial Zone
- Rural land proposed to be zoned industrial
- Structure Plan Area
- Lateral Spread Overlay
- Open Space
- 0.5% AEP (1 in 200 Year) modelled floodable land (Horizons Regional Council)
(Information not part of plan change)

- Precinct Roads**
- Existing Roads
- Local Roads
- Proposed Intersections
- Turners Road Designation

Aerial dated February 2012

0 250 500 750 1000 m

Scale 1:10,000 at A4

Plan Change 52 Kawakawa Industrial Park Growth Area

